



**MAVERICKS®**  
SOLAR ENERGY SOLUTIONS PVT. LTD.

# PRODUCT CATALOGUE



**Manufacturer Of  
All Kinds Of Solar Street  
& Led Lights**

[www.mavericksenergy.in](http://www.mavericksenergy.in)



**OEM**  
SERVICES

Welcome to **Mavericks Solar Energy Solution Pvt. Ltd.**  
your trusted manufacturer of high-quality LED lights.

With our expertise in solar energy solutions, we are dedicated to providing reliable and sustainable lighting options for a variety of applications. From energy-efficient street lights to innovative indoor and outdoor lighting solutions, we offer a comprehensive range of LED lights designed to meet your specific needs.

With Mavericks Solar Energy Solution, you can illuminate your spaces with confidence, knowing that you are making a positive impact on the environment while enjoying the long-lasting performance and cost savings of our LED lights.

Choose us for cutting-edge technology, exceptional quality, and a brighter future with sustainable lighting solutions.

**ABOUT US**

# Solar CCTV Camera

MAKE IN INDIA



## Solar Panel Specification

Max. Solar Panel Wattage : 40W  
Solar Panel Voltage : 12V system (Voc-22V)  
Pole : 4.5 Meters

## Camera Specifications

Camera Technology : 4G CCTV Camera with Sim Support  
Camera Range : 20 to 30 Meters  
Material : Plastic  
Camera Resolution : 2048x1536  
Camera Type : 3MP Night Vision Color  
Features : Human/Object Detection, Two-Way Audio Communication, Local Recording, Night Vision, Motion Sensor

## Battery Specifications

Battery Voltage : 13.8V (Li-FeP04)  
Battery Amps : 12Ah  
Max. Charging Current : 120W  
Load Operation : 24 hours  
Connecting Terminal : 11.2 inch  
Working Hours : Battery Switch, Solar, CCTV Load, Router/Modern Load

## Output Specifications

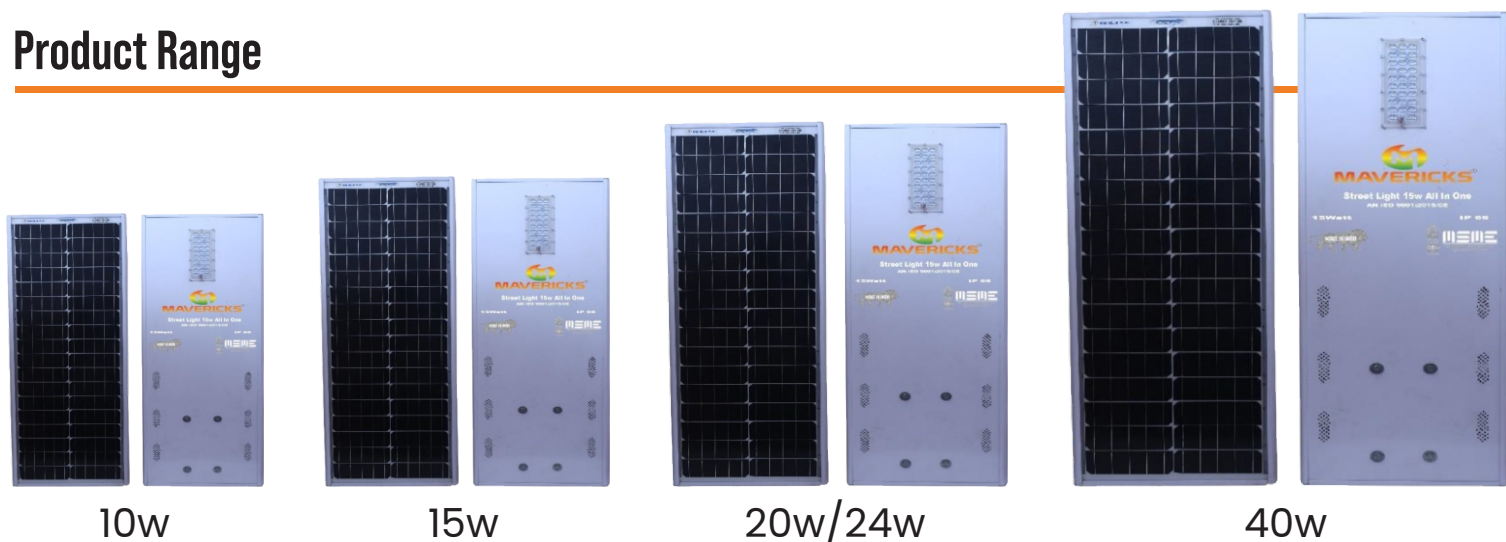
Output Type : 12V Buck (Voltage Regulated)  
Modern/Router Output : 5V/750mA (Optional 9V)



MADE IN INDIA

# ALL IN ONE SOLAR **STREET LIGHT**

# Product Range



10w

15w

20w/24w

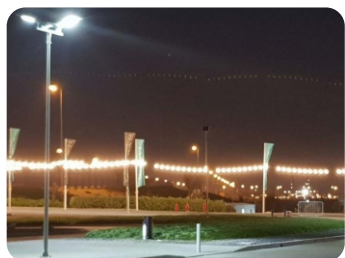
40w

## Technical Detail

Solar PV Module Mono, with PIR Motion Sensor, Auto Dusk to Dawn Operation  
Inbuilt Charge Controller-Micro Controller Based/MPPT etc.

Model No.	MSAIO-10W	MSAIO-15W	MSAIO-20W	MSAIO-24W	MSAIO-40W
Power	10 W	15 W	20 W	24 W	40 W
Solar Panel	40 W	50 W	60 W	75 W	100 W
Battery Type	Life P04	Life P04	Life P04	Life P04	Life P04
Capacity	12ah	18ah	24ah	30ah	36/42ah
Total Lumens	1300lm	1950lm	2600lm	3120lm	5200lm
Colour Temp.	6000K-6500K	6000K-6500K	6000K-6500K	6000K-6500K	6000K-6500K
Range	8 Meters	8 Meters	8 Meters	8 Meters	8 Meters
Warranty	5 Years	5 Years	5 Years	5 Years	5 Years
Charging Time	6-8 Hrs	6-8 Hrs	6-8 Hrs	6-8 Hrs	6-8 Hrs
Working Hours	2-3 Days	2-3 Days	2-3 Days	2-3 Days	2-3 Days
Weight	8 Kg	10.9 Kg	11.8 Kg	13.8 Kg	18 Kg
Dimensions	650*34*55MM	785*390*55MM	975*354*55MM	1130*340*55MM	1050*500*55MM

## Product Application



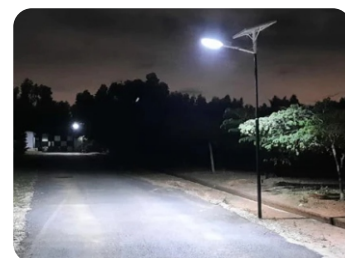
Factory/ Industry



Park

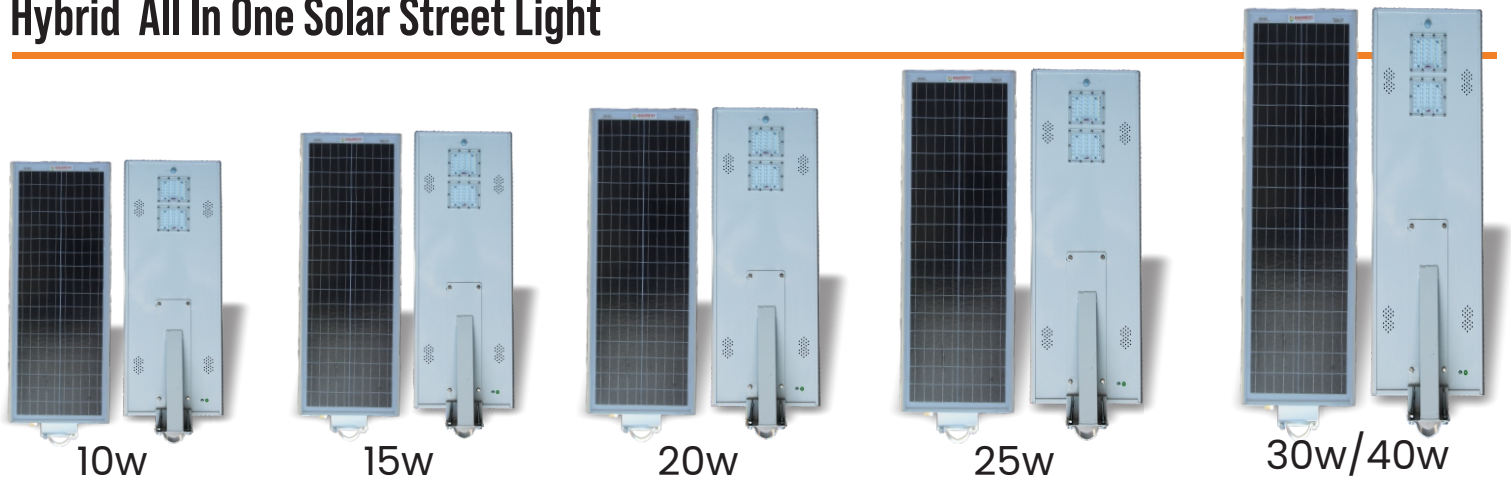


School | College | University



Village Lighting

# Hybrid All In One Solar Street Light



## Technical Detail

Mavericks Solar Energy Solutions Pvt. Ltd. Hybrid All In One Solar Street Light (Inbuilt LifePo4)  
Charging Solar/On Grid Supported, Auto ON/OFF Function (MNRE Approved)

Model No.	10W	15W	20W	25W	30/40W
Luminary	10W	15W	20W	25W	30/40W
Lumens	1300	1950	2600	3250	3900
Solar Panel	40W Mono	50W Mono	60W Mono	75W Mono	75W/100W Mono
Battery Pack	6ah/LifePo4	12ah/LifePo4	18ah/LifePo4	24ah/LifePo4	30ah/LifePo4
Charging Time	5-6 Hrs	5-6 Hrs	5-6 Hrs	5-6 Hrs	5-6 Hrs
Working Hours	2-3 Night	2-3 Night	2-3 Night	2-3 Night	2-3 Night
Waterproof	IP-65	IP-65	IP-65	IP-65	IP-65
Material	Aluminium Alloy	Aluminium Alloy	Aluminium Alloy	Aluminium Alloy	Aluminium Alloy
Working Temp.	-20°C To 65°C	-20°C To 65°C	-20°C To 65°C	-20°C To 65°C	-20°C To 65°C
LED Working Life	More Than 50000 Hrs	More Than 50000 Hrs	More Than 50000 Hrs	More Than 50000 Hrs	More Than 50000 Hrs
LED Chip	High Power LED	High Power LED	High Power LED	High Power LED	High Power LED
Charge Controller	Micro Control / MPPT Based	Micro Control / MPPT Based	Micro Control / MPPT Based	Micro Control / MPPT Based	Micro Control / MPPT Based
Operating Mode	Dusk To Dawn Operating	Dusk To Dawn Operating	Dusk To Dawn Operating	Dusk To Dawn Operating	Dusk To Dawn Operating
Warranty	5 Years	5 Years	5 Years	5 Years	5 Years
Grid System	On Grid Supported	On Grid Supported	On Grid Supported	On Grid Supported	On Grid Supported
Weight	7.3Kg	8.3Kg	11.2Kg	13Kg	13.8Kg/16.8Kg
Dimensions	650*390*55MM	785*340*55MM	975*354*55MM	1130*390*55MM	1130*340*55MM/ 1050*500*55MM

# Hybrid Semi Solar LED Street Light



10w



15w



20w



25w



30w/40w

## Technical Detail

Model No.	10W	15W	20W	25W	30/40W
Luminary	10W	15W	20W	25W	30/40W
Lumens	1300	1950	2600	3250	3900/5200
Solar Panel	40W Mono	50W Mono	60W Mono	75W Mono	75W/100W Mono
Battery Pack	6ah/LifePo4	12ah/LifePo4	18ah/LifePo4	24ah/LifePo4	30ah/LifePo4
Charging Time	5-6 Hrs	5-6 Hrs	5-6 Hrs	5-6 Hrs	5-6 Hrs
Working Hours	2-3 Night	2-3 Night	2-3 Night	2-3 Night	2-3 Night
Waterproof	IP-65	IP-65	IP-65	IP-65	IP-65
Material	Aluminium Alloy	Aluminium Alloy	Aluminium Alloy	Aluminium Alloy	Aluminium Alloy
Working Temp.	-20°C To 65°C	-20°C To 65°C	-20°C To 65°C	-20°C To 65°C	-20°C To 65°C
LED Working Life	More Than 50000 Hrs	More Than 50000 Hrs	More Than 50000 Hrs	More Than 50000 Hrs	More Than 50000 Hrs
LED Chip	High Power LED	High Power LED	High Power LED	High Power LED	High Power LED
Charge Controller	Micro Control / MPPT Based	Micro Control / MPPT Based	Micro Control / MPPT Based	Micro Control / MPPT Based	Micro Control / MPPT Based
Operating Mode	Dusk To Dawn Operating	Dusk To Dawn Operating	Dusk To Dawn Operating	Dusk To Dawn Operating	Dusk To Dawn Operating
Warranty	5 Years	5 Years	5 Years	5 Years	5 Years
Grid System	On Grid Supported	On Grid Supported	On Grid Supported	On Grid Supported	On Grid Supported



**SEMI INTEGRATED**

**SOLAR LED STREET LIGHT**



# Technical Detail

Also available in : 50W



**MSSL 600-6W And 7W**

Input Power : 6 W And 7 W	IP Standard : IP 65
Battery : LifePO4 /6ah	LED Package : Osram
Materials : Aluminium Die Cast	Backup : 15-18 (Dimmable)
Colour Temp. : 3000K / 4000K / 6500K	Warranty : 5 Years



**MSSL 600-9W**

Input Power : 9 W	IP Standard : IP 65
Battery : LifePO4 /12ah	LED Package : Osram
Materials : Aluminium Die Cast	Backup : 15-18 (Dimmable)
Colour Temp. : 3000K / 4000K / 6500K	Warranty : 5 Years



**MSSL 600-12W TO 15W**

Input Power : 12 W And 15 W	IP Standard : IP 65
Battery : LifePO4 /18ah	LED Package : Osram
Materials : Aluminium Die Cast	Backup : 15-18 (Dimmable)
Colour Temp. : 3000K / 4000K / 6500K	Warranty : 5 Years



**MSSL 600-18W**

Input Power : 18 W	IP Standard : IP 65
Battery : LifePO4 /24ah	LED Package : Osram
Materials : Aluminium Die Cast	Backup : 15-18 (Dimmable)
Colour Temp. : 3000K / 4000K / 6500K	Warranty : 5 Years



**MSSL 600-18W (Acrylic Sheet)**

Input Power : 18 W	IP Standard : IP 65
Battery : LifePO4 /24ah	LED Package : Osram
Materials : Aluminium Die Cast	Backup : 15-18 (Dimmable)
Colour Temp. : 3000K / 4000K / 6500K	Warranty : 5 Years



**MSSL 600-24W**

Input Power : 24 W	IP Standard : IP 65
Battery : LifePO4 /30ah	LED Package : Osram
Materials : Aluminium Die Cast	Backup : 15-18 (Dimmable)
Colour Temp. : 3000K / 4000K / 6500K	Warranty : 5 Years



**MSSL 600-36W**

Input Power : 36 W	IP Standard : IP 65
Battery : LifePO4 /36ah	LED Package : Osram
Materials : Aluminium Die Cast	Backup : 15-18 (Dimmable)
Colour Temp. : 3000K / 4000K / 6500K	Warranty : 5 Years



**MSSL 600-40W**

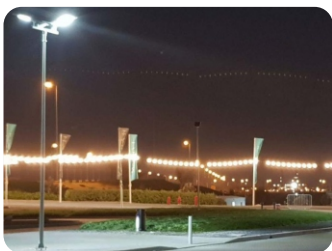
Input Power : 40 W	IP Standard : IP 65
Battery : LifePO4 /42ah	LED Package : Osram
Materials : Aluminium Die Cast	Backup : 15-18 (Dimmable)
Colour Temp. : 3000K / 4000K / 6500K	Warranty : 5 Years



**MSSL 600-40W**

Input Power : 40 W	IP Standard : IP 65
Battery : LifePO4 /42ah	LED Package : Osram
Materials : Aluminium Die Cast	Backup : 15-18 (Dimmable)
Colour Temp. : 3000K / 4000K / 6500K	Warranty : 5 Years

# Product Application



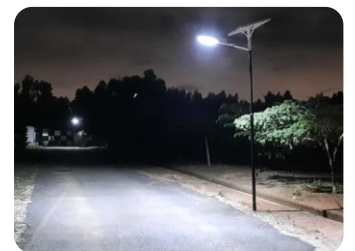
Factory/ Industry



Park



School | College | University



Village Lighting



# Solar Garden Light



### MSGL1 >5W

**King Size Garden Light Body** : AL construction duly powder coated with Aluminium  
**Pole** : Also MS Powder Coated  
**LED** : 20SMD (make Edison) Watt <2w  
**Panel** : High Premium quality crystalline solar module (>5Wp) (Riel/Equivalent)  
**Battery** : High Capacity Lead Acid sealed maintenance free, 12V, 4.5Ah  
**Total Height** : 3ft 8inch  
**Pole height** : 2.5 ft



### MSGL6- 2 Watt

**Garden Light Body** : AL construction duly powder coated mild steel  
**Pole** : Also MS Powder coated  
**LED** : 2,0.75 w UHB led  
**Panel** : 2 Watt  
**Battery** : (AA,Ni-Mh2200MAh,3.6V) Lumens 50-60  
**Total Height** : 23.6 inch  
**Pole Height** : 2 ft  
**Back Up** : 6 Hrs



### MSGL7- 0.5 Watt

**Garden Light Body** : M.S construction duly powder coated mild street  
**Pole** : Also MS Powder coated  
**Ultra Bright White LED** : 1,0.5 w UHB  
**LED Panel** : 1 Watt  
**Battery** : AA,Ni-Mh2200 Mah,3.6 V Lumens 50-60  
**Total Height** : 23.6 inch  
**Pole Height** : 2 ft  
**Back Up** : 6 Hrs



### MSGL7- 0.5 Watt

**Bollard Light Body** : Aluminum Powder Coated  
**Panel** : 3-4 Watt  
**Battery** : 6V,4.5 Ah  
**LED** : 12 SMD,0.5 MM, 1.5 W  
**Battery** : AA,Ni-Mh2200 Mah,3.6 V Lumens 50-60  
**Dia Meter Base** : 150MM  
**Dia Meter Top** : 250MM  
**Total Height** : 26 Inch



### MSBLD3 (Bollard)- 1.5 Watt

---

**Bollard Light Body** : Aluminum Powder Coated  
**Panel** : 3-4 Watt  
**Battery** : 6 V,4.5 Ah  
**LED** : 12 SMD,0.5 MM, 1.5 W  
**Dia Meter Base** : 150MM  
**Dia Meter Top** : 250MM  
**Total Height** : 26.8 inch



### MSBLD5 (Bollard)- 1.5 Watt

---

**Bollard Light Body** : Bollard Light Body  
**Panel** : 3-4 Watt  
**Battery** : 6 V,4.5 Ah  
**LED** : 2 Watt  
**Battery** : 12 SMD,0.5 MM, 1.5 W  
**Dia Meter Top** : 250MM  
**Total Height** : 40.5 inch  
**Pole Height** : : 2.5ft



### MSBLD6 (Bollard) - 1.5 Watt

---

**Outer Body** : All Stainless Steel Body  
**Panel** : 3Watt  
**Battery** : 6V, 4.5 Ah  
**LED** : 12SMD, 1.5W  
**Total Height** : 11.2 inch  
**Working Hours** : Dusk to Dawn



Resorts



Park



Party Lawns



For Villa's

# In-Built Light Solar Home Light System



Battery Lifepo4	Solar Home Light 12V	Solar Module	DC Bulb	Smart Phone USB Charger	Charging Time
12.8V/6ah	In-Built Home Light	20W with 5mtr wire	3W/12V (2Set with 3mtr wire)	2 Nos	6 To 8 Hrs
12.8V/12ah	In-Built Home Light	40W with 10mtr wire	3W/12V (3Set with 3mtr wire)	2 Nos	6 To 8 Hrs

# BIG SOLAR HOME LIGHT SYSTEM WITH CEILING FAN



Battery Lifepo4	Home Light Without FM	Solar PV Module	DC Bulb	Smart Phone USB Charger	Charging Time
12.8V/42ah	In-Built Home Light	100/125W with 10mtr wire	5W/12V (6Set with 4mtr wire)	2 Nos	6 To 8 Hrs
12.8V/90ah	In-Built Home Light	165/200W with 15mtr wire	7W/12V (7Set with 5mtr wire)	2 Nos	6 To 8 Hrs

# HOME LIGHT SYSTEM WITH FM RADIO, BLUETOOTH & USB PLAYER



Battery Lifepo4	Home Light With FM	Solar PV Module	DC Bulb	Smart Phone USB Charger	Charging Time
12.8V/6ah	In-Built Home Light	20W	3W/12V (2Set with 3mtr wire)	2 Nos	6 To 8 Hrs
12.8V/12ah	In-Built Home Light	50W	3W/12V (3Set with 3mtr wire)	2 Nos	6 To 8 Hrs



# LED Flood Light

# Technical Detail



**MSFL\_20W**

Input Power : 20 W	CRI : >80
Input Voltage : AC220V, 50/60Hz	IP Standard : IP 66
Luminous : 2400W	LED Package : 1W, 3030 Edison
Materials : Aluminium Die Cast	Power Factor : >0.95
Color Temp : 3000K / 4000K 6500K	



**MSFL\_30W**

Input Power : 30 W	CRI : >80
Input Voltage : AC220V, 50/60Hz	IP Standard : IP 66
Luminous : 3600W	LED Package : 1W, 3030 Edison
Materials : Aluminium Die Cast	Power Factor : >0.95
Color Temp : 3000K / 4000K 6500K	



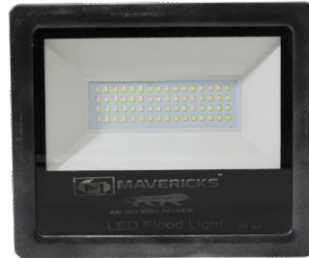
**MSFL\_50W**

Input Power : 50 W	CRI : >80
Input Voltage : AC220V, 50/60Hz	IP Standard : IP 66
Luminous : 6000W	LED Package : 1W, 3030 Edison
Materials : Aluminium Die Cast	Power Factor : >0.95
Color Temp : 3000K / 4000K 6500K	



**MSFL\_60W**

Input Power : 60 W	CRI : >80
Input Voltage : AC220V, 50/60Hz	IP Standard : IP 66
Luminous : 7200W	LED Package : 1W, 3030 Edison
Materials : Aluminium Die Cast	Power Factor : >0.95
Color Temp : 3000K / 4000K 6500K	



**MSFL\_100W**

Input Power : 100 W	CRI : >80
Input Voltage : AC220V, 50/60Hz	IP Standard : IP 66
Luminous : 12000W	LED Package : 1W, 3030 Edison
Materials : Aluminium Die Cast	Power Factor : >0.95
Color Temp : 3000K / 4000K 6500K	



**MSFL\_100W**

Input Power : 100 W	CRI : >80
Input Voltage : AC220V, 50/60Hz	IP Standard : IP 66
Luminous : 12000W	LED Package : 1W, 3030 Edison
Materials : Aluminium Die Cast	Power Factor : >0.95
Color Temp : 3000K / 4000K 6500K	



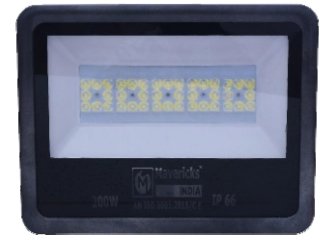
**MSFL\_150W**

Input Power : 150 W	CRI : >80
Input Voltage : AC220V, 50/60Hz	IP Standard : IP 66
Luminous : 18000W	LED Package : 1W, 3030 Edison
Materials : Aluminium Die Cast	Power Factor : >0.95
Color Temp : 3000K / 4000K 6500K	



**MSFL\_200W**

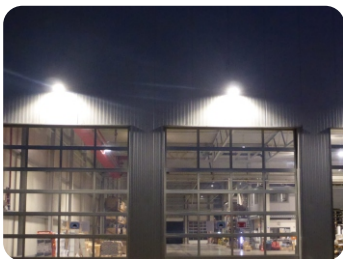
Input Power : 200 W	CRI : >80
Input Voltage : AC220V, 50/60Hz	IP Standard : IP 66
Luminous : 24000W	LED Package : 1W, 3030 Edison
Materials : Aluminium Die Cast	Power Factor : >0.95
Color Temp : 3000K / 4000K 6500K	



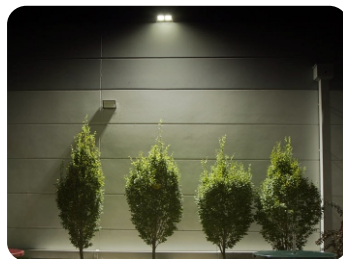
**MSFL\_200W (With Lens)**

Input Power : 200 W	CRI : >80
Input Voltage : AC220V, 50/60Hz	IP Standard : IP 66
Luminous : 24000W	LED Package : 1W, 3030 Edison
Materials : Aluminium Die Cast	Power Factor : >0.95
Color Temp : 3000K / 4000K 6500K	

# Product Application



Factory/ Industry



Park



School | College | University



City Lighting



# AC/DC Street Light



# Technical Detail



**MSLE 500-18W**

Input Power : 18 W	CRI : >70
Input Voltage : AC220V, 50/60Hz	IP Standard : IP 65
Beam Angle : 60/90/120 Degree	LED Package : 1W, 3030 Edison
Materials : Aluminium Die Cast	Power Factor : >0.95
Color Temp : 3000K / 4000K	Efficacy : 120Lm/ W
6500K	



**MSLE 500-24W**

Input Power : 24 W	CRI : >70
Input Voltage : AC220V, 50/60Hz	IP Standard : IP 65
Beam Angle : 60/90/120 Degree	LED Package : 1W, 3030 Edison
Materials : Aluminium Die Cast	Power Factor : >0.95
Color Temp : 3000K / 4000K	Efficacy : 120Lm/ W
6500K	



**MSLE 500-30W**

Input Power : 30 W	CRI : >70
Input Voltage : AC220V, 50/60Hz	IP Standard : IP 65
Beam Angle : 60/90/120 Degree	LED Package : 1W, 3030 Edison
Materials : Aluminium Die Cast	Power Factor : >0.95
Color Temp : 3000K / 4000K	Efficacy : 120Lm/ W
6500K	



**MSLE 500-40W**

Input Power : 40 W	CRI : >70
Input Voltage : AC220V, 50/60Hz	IP Standard : IP 65
Beam Angle : 60/90/120 Degree	LED Package : 1W, 3030 Edison
Materials : Aluminium Die Cast	Power Factor : >0.95
Color Temp : 3000K / 4000K	Efficacy : 120Lm/ W
6500K	



**MSLE 500-50W**

Input Power : 50 W	CRI : >70
Input Voltage : AC220V, 50/60Hz	IP Standard : IP 65
Beam Angle : 60/90/120 Degree	LED Package : 1W, 3030 Edison
Materials : Aluminium Die Cast	Power Factor : >0.95
Color Temp : 3000K / 4000K	Efficacy : 120Lm/ W
6500K	



**MSLE 500-100W**

Input Power : 100 W	CRI : >70
Input Voltage : AC220V, 50/60Hz	IP Standard : IP 65
Beam Angle : 60/90/120 Degree	LED Package : 1W, 3030 Edison
Materials : Aluminium Die Cast	Power Factor : >0.95
Color Temp : 3000K / 4000K	Efficacy : 120Lm/ W
6500K	

# Product Application



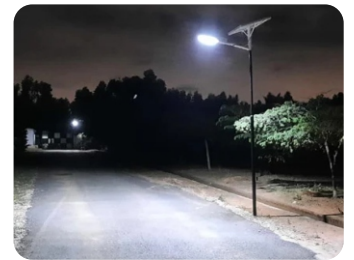
Factory/ Industry



Park



School | College | University



Village Lighting

# AC/DC Street Light



## Technical Detail

Model No.	SLLACDC-110W	SLLACDC-150W	SLLACDC-250W
LED Wattage	1W Edison 1W LED 130lm-140lm	1W Edison 1W LED 130lm-140lm	5W Edison 5W LED 130lm-140lm
Input Voltage	110-240V, 50/60Hz	110-240V, 50/60Hz	110-240V, 50/60Hz
Surge Protection	6 Kva	6 Kva	16 Kva
Power Factor	0.99	0.99	0.99
AC- D-Efficiency	>95%	>95%	>95%
DC-D- Efficiency	>90%	>90%	>90%
AC Power	110W	150W	250W
DC-Power	40W	40W	40W
High Cut Off	380V	380V	380V
Low Cut Off	80V	80V	80V
Lux	AC-Approx 13200 Lumen DC-4800	AC-Approx 18000 Lumen DC-4800	AC-Approx 30000 Lumen DC-4800
Body	Aluminium Die Casting With Estuation	Aluminium Die Casting With Estuation	Aluminium Die Casting With Estuation
IP 66	Available	Available	Available
Battery	60ah/12.8V, 5Hours Backup Po4 Battery	60ah/12.8V, 6Hours Backup Po4 Battery	60ah/12.8V, 6Hours Backup Po4 Battery
LED Type	Osram/Edison	Osram/Edison	Osram/Edison
Color Temp.	6500K	6500K	6500K
LED Color	Cool White	Cool White	Cool White
LED Life Span	50,000 Working Hour	50,000 Working Hour	50,000 Working Hour
Optical Cover	With Lens Model Depend On Availability	With Lens Model Depend On Availability	With Lens Model Depend On Availability
Warranty	2 Years	2 Years	2 Years



**भारतीय मानक ब्यूरो**  
BUREAU OF INDIAN STANDARDS  
Ministry of Consumer Affairs, Food & Public Distribution,  
Govt. of India

बि.सं. 110002  
Manak Bhawan, 9 Bahadur Shah Zafar Marg, New Delhi - 110002  
☎️/Phone: +91-11-23238956/23239103/23233737/23239402  
✉️/Email: registration@bis.gov.in  
वेबसाइट/Website: <https://bis.gov.in/> <https://www.csisbis.in/BIS/>

Our Ref: Registration/CRS 2023-3691/R-81014575 Date: 09-08-2023

**Subject : Licence Document**

Manufacturing Unit :	Mavericks Solar Energy Solutions Pvt Ltd 44 F.F. BUILDING MAVERICKS SOLAR ENERGY, KHICHRIPUR NEAR KENDRYA VIDYALAYA GATE NO-2, GALI NO-1, DELHI, India-110091 mavericks16@gmail.com 9540674848	
----------------------	---	--

Dear Sir,

1. With reference to your Application, we are pleased to inform you that it has been decided to grant you licence as per details given below :

Product Category:	LED Flood Lights
Product Name:	LED Flood Lights
IS NO :	IS 10322 (PART 5) SEC 5 : 2013
Brand (As Declared by Manufacturer) :	MAVERICKS
Model :	[Brand → MAVERICKS, Models → MSFL-100W, MSFL-120W, MSFL-150W, MSFL-200W, MSFL-200W, MSFL-250W, MSFL-300W, MSFL-350W, MSFL-36W, MSFL-400W, MSFL-450W, MSFL-500W, MSFL-500W, MSFL-600W, MSFL-60W, MSFL-450W, MSFL-700 W, MSFL-72W, MSFL-75W, MSFL-90W]
Factory Address :	44 F.F. BUILDING MAVERICKS SOLAR ENERGY, KHICHRIPUR NEAR KENDRYA VIDYALAYA GATE NO-2, GALI NO-1, DELHI, India-110091

2. The licence is being granted for your unit located at the address and for the brand and models mentioned at serial no 1 above.

3. The number assigned to this Licence is **R-81014575** which has been made operative from **09-08-2023** and is valid upto **08-08-2025**. The Licence Number should invariably be referred to in your future correspondence.

4. The rights and privileges under the licence shall not be exercised by any other factory / organization at any other location. This licence is not transferable. In the event of shifting of the manufacturing machinery from the registered premises to some other place use of the licence Number shall be stopped and BIS shall be informed.

5. The licensee shall comply with the provisions of the Act, rules and regulations framed thereunder and as amended from time to time.

6. The licensee shall follow the guidelines for the use of Standard Mark and labeling requirements as per Annex-I.

7. The licensee shall not use the licence in any manner which contravenes the provisions of Act, rules and regulations framed thereunder and as amended from time to time.

8. Upon expiry of validity, stoppage or suspension or cancellation of licence, you shall discontinue forthwith the self declaration of conformity to the relevant Indian Standard(s) and withdraw all promotional and advertising matter which contains any reference thereto.

9. For renewal of licence, the licensee shall have to apply to BIS three months in advance before expiration of the licence and application form for renewal is available on BIS website.

10. The licence is not transferable. Kindly acknowledge receipt of this letter.

Thanking you,

Yours faithfully,  
(Avak Data)  
Scientist-D  
Toll-free : +91-11-23238956  
E-mail: registration@bis.gov.in

Note: This is a system generated letter. Hence signature is not required.  
To verify authentication of letter, kindly scan the QR code on this letter.



OUR CERTIFICATES



**MAVERICKS<sup>®</sup>**  
SOLAR ENERGY SOLUTIONS PVT. LTD.



Scan for Whatsapp



Scan for Website

## **CONTACT US**

---

**Office Address** - New Delhi.

**Contact No.** - +91-9540674848 | +91-9540654848

**Email** - [Maverickssps15@gmail.com](mailto:Maverickssps15@gmail.com)

**Website** - [www.mavericksenergy.in](http://www.mavericksenergy.in)